

FOR LEASE

# 2365 PARAGON DRIVE

SUITE B  
SAN JOSE, CALIFORNIA



## PROPERTY HIGHLIGHTS

- + ± 5,050 SF
- + 40% HVAC Drop Ceiling
- + 60% Warehouse/Manufacturing Floor
- + Coffee Bar
- + Roll-Up Door
- + 4 Private Offices
- + Great Access to 880, 101, and 680
- + 3/1000 parking
- + Call for Pricing



## CONTACT US

### FRANK FRIEDRICH

Senior Vice President  
+1 408 453 7495  
frank.friedrich@cbre.com  
Lic. 01159876

### DONALD LONSINGER

Senior Vice President  
+1 408 453 7471  
donald.lonsinger@cbre.com  
Lic. 00895646

[www.cbre.com/siliconvalley](http://www.cbre.com/siliconvalley)

**CBRE**

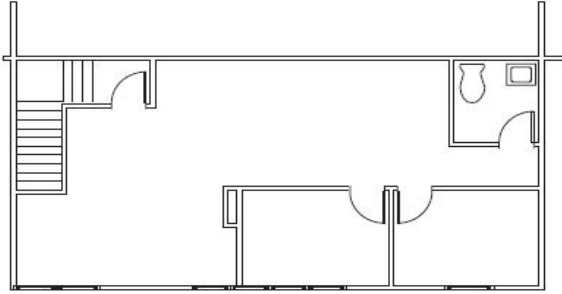
# FOR LEASE 2365 PARAGON DRIVE

SUITE B

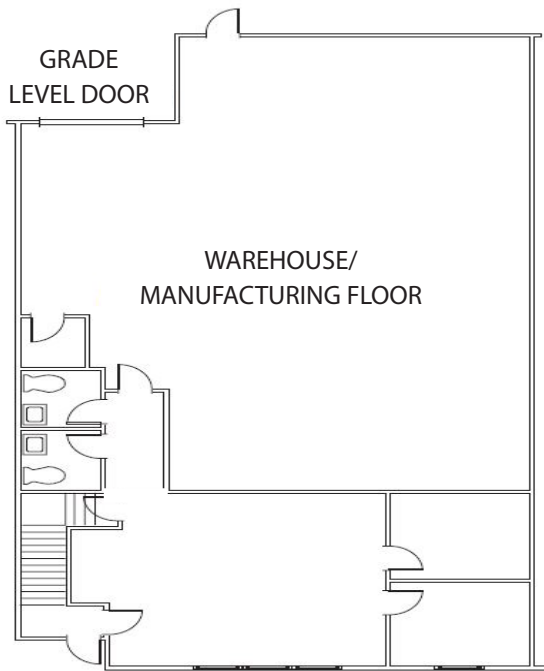


## FLOOR PLAN

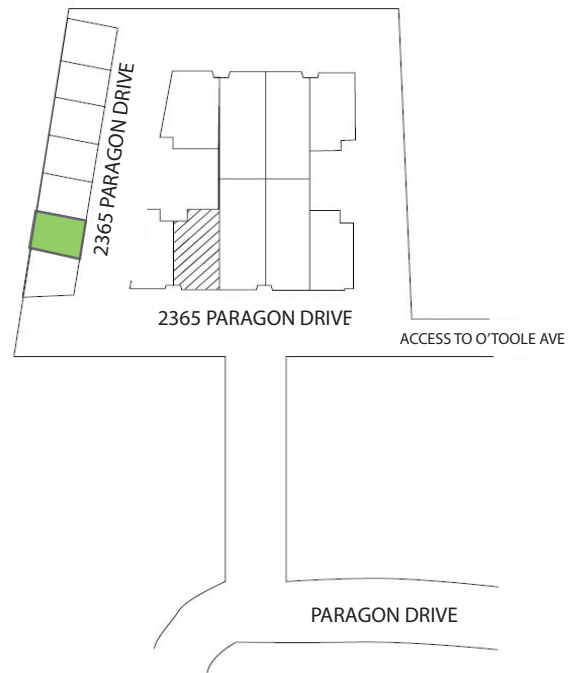
### SECOND FLOOR



### FIRST FLOOR



### SITE PLAN



© 2019 CBRE, Inc. All rights reserved. This information has been obtained from sources believed reliable, but has not been verified for accuracy or completeness. Any projections, opinions, or estimates are subject to uncertainty. The information may not represent the current or future performance of the property. You and your advisors should conduct a careful, independent investigation of the property and verify all information. Any reliance on this information is solely at your own risk. CBRE and the CBRE logo are service marks of CBRE, Inc. and/or its affiliated or related companies in the United States and other countries. All other marks displayed on this document are the property of their respective owners. Photos herein are the property of their respective owners and use of these images without the express written consent of the owner is prohibited.